

FEATURES:

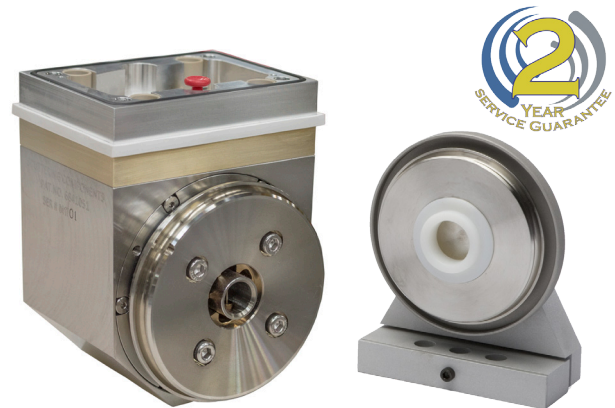
- Patented power-delivery technology
- Unique target attachment method
- Durable, long-life rotary seals
- Compact version of MC series
- Non-proprietary target design
- Patented target water fill/drain feature

BENEFITS:

- Highest reliability in today's market
- Easy to install
- **Retrofit from competitor compact end block**
- Fastest target change available
- 1 hour (average) annual maintenance
- 3 hour total end block rebuild
- Lowest maintenance cost
- Use targets from any vendor
- No inductive heating impact - no brush dust

NEW SYSTEM INSTALLATIONS:

- Available as individual end blocks, end blocks plus the TRM-Bar,[™] QRM-Bar,[™] or mQRM-Bar[™] magnetics, or complete e-Cathode[™] systems - ready to install



Patented cMC-Series Internal Mount End Block

Average End Block Weight: 15 kg

NEW FEATURES:

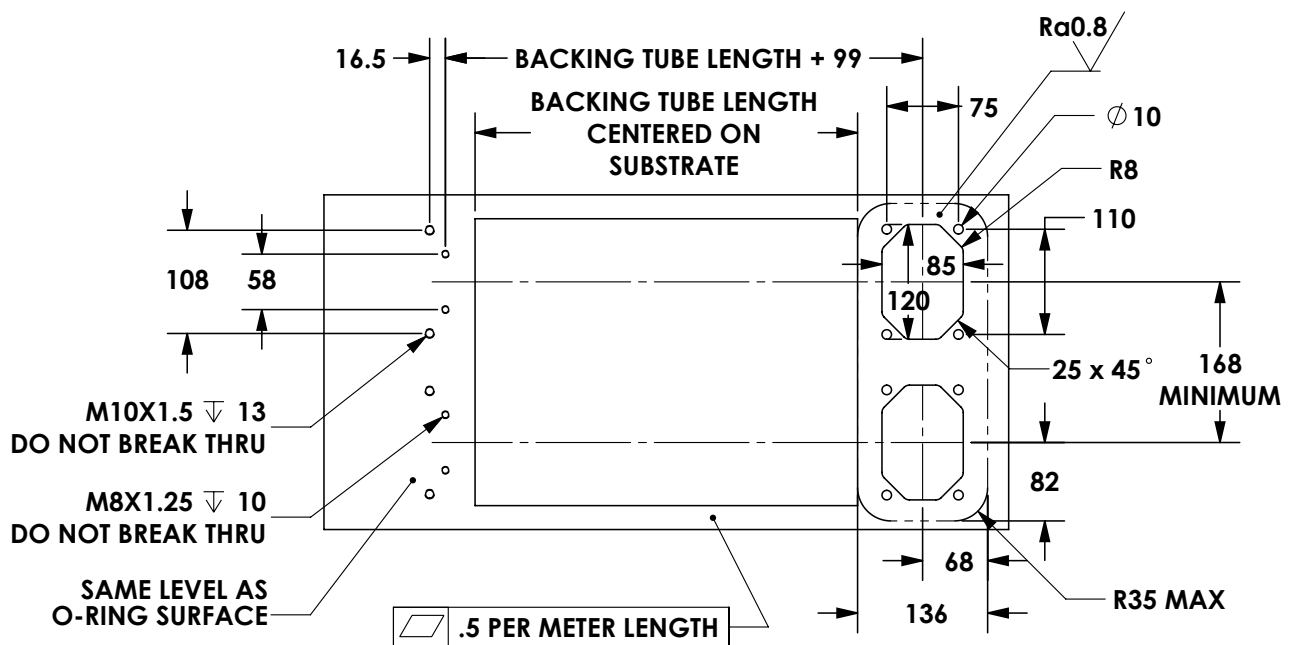
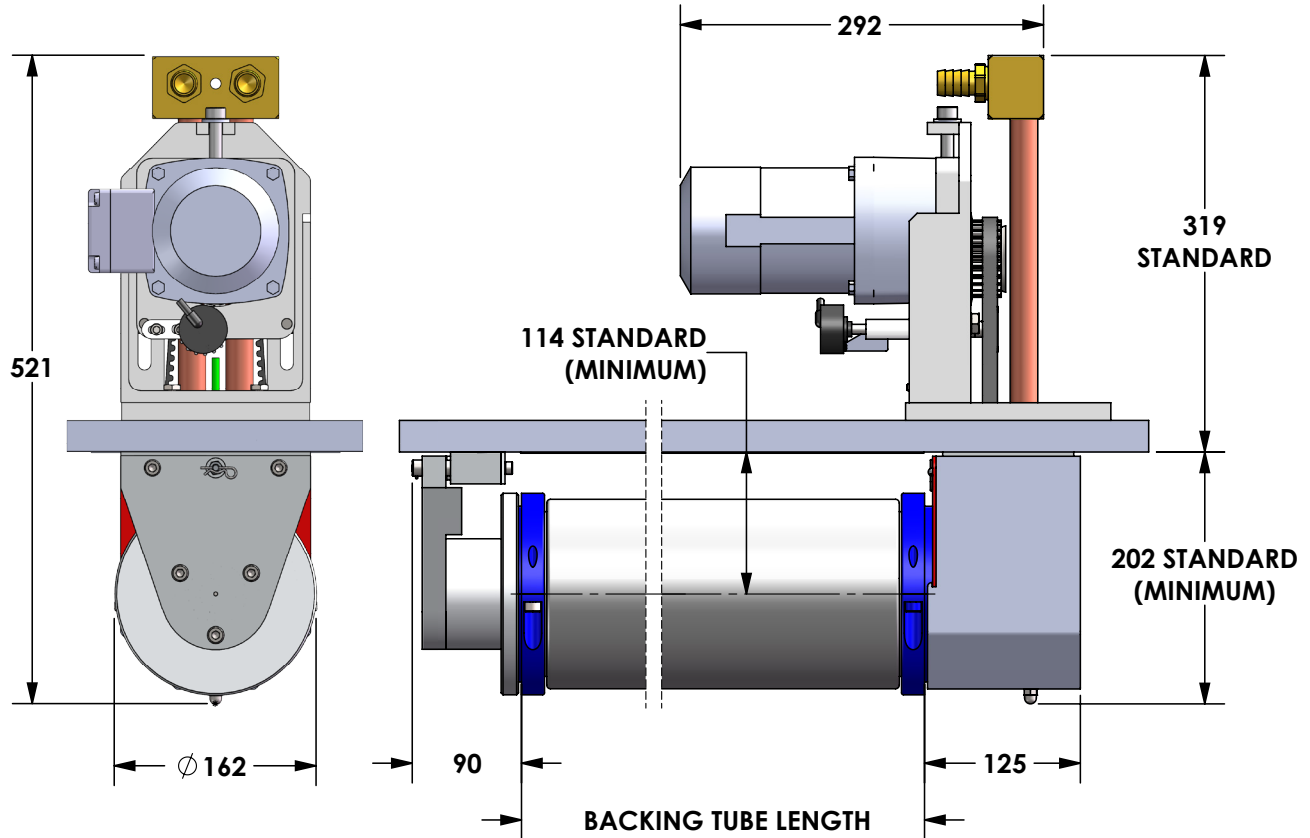
- Improved insulator with grounded base enhances reliability and heat capability
- Water dam to eliminate damage from external water leaks
- More compact

UPGRADE PLANARS TO ROTARIES:

- Increase the output and quality of your existing coater without adding chambers
- Coater modification and integration support available

Model	Power	V/A	Target (mm)
cMC	Up to 100 kW DC or 80 kHz MFAC	1500 V/225 A	Up to 2500

The cMC-Series, internal mount end block provides high-performance and reliability in an even more compact design



TOLERANCES
 XXXmm = ± 1.0 mm
 XXX.Xmm = ± 0.1 mm