



## Datasheet

### DC Power Supplies GX 50 – GX 150



GX with display



GX with status-LEDs



GX with blind case



Rear view



Duo-GX open

GX sputtering power supplies are able to eliminate up to 40,000 arcs per second automatically. This extreme capability combined with the small size of the power supply are significant features that make the series GX stand out. The power supplies can be operated at full output power without operating time limitations, and they can also be interconnected to extend power.

#### ★ Highlights

- ★ Output power 5 kW – 15 kW
- ★ Water cooling
- ★ Magnetic valve control (optional)
- ★ ½ 19"-case, 3 HU
- ★ Floating output
- ★ Automatic arc handling

#### We are happy to help!

ADL Analoge & Digitale Leistungselektronik GmbH  
Bunsenstr. 30 · D-64293 Darmstadt  
www.adl-gmbh.com

#### Customer Support

Tel. +49 (0) 6151 86072-41 or -42  
Fax +49 (0) 6151 86072-75  
E-Mail: sales@adl-gmbh.com

# Datasheet

## Variants

Type	DC-Output			Order-No.
<b>GX 50/250</b>	5 kW	250 V	50 A	<b>07Z010</b>
<b>GX 50/800</b>	5 kW	800 V	14 A	<b>07Z005</b>
<b>GX 50/1000</b>	5 kW	1000 V	10 A	<b>07Z015</b>
<b>GX 60/800</b>	6 kW	800 V	15 A	<b>07Z040</b>
<b>GX 60/1000</b>	6 kW	1000 V	12 A	<b>07Z045</b>
<b>GX 80/800</b>	8 kW	800 V	20 A	<b>07Z090</b>
<b>GX 80/1000</b>	8 kW	1000 V	16 A	<b>07Z099</b>
<b>GX 100/400</b>	10 kW	400 V	38 A	<b>07Z141</b>
<b>GX 100/600</b>	10 kW	600 V	30 A	<b>07Z142</b>
<b>GX 100/800</b>	10 kW	800 V	25 A	<b>07Z140</b>
<b>GX 100/1000</b>	10 kW	1000 V	20 A	<b>07Z149</b>
<b>GX 120/200</b>	12 kW	200 V	60 A	<b>07Z151</b>
<b>GX 120/800</b>	12 kW	800 V	30 A	<b>07Z190</b>
<b>GX 150/800</b>	15 kW	800 V	38 A	<b>07Z240</b>
<b>GX 150/1000</b>	15 kW	1000 V	30 A	<b>07Z249</b>

### We are happy to help!

ADL Analoge & Digitale Leistungselektronik GmbH  
Bunsenstr  e 30 · D-64293 Darmstadt  
www.adl-gmbh.com

### Customer Support

Tel. +49 (0) 6151 86072-41 or -42  
Fax +49 (0) 6151 86072-75  
E-Mail: sales@adl-gmbh.com

# Datasheet

Options and Accessories - detailed Information see Datasheet "Accessories"

Type	Order-No.
<b>Control Interfaces</b>	
AS4 - analogue for U-, I- or P-Regulation	01Y001
AS4F - analogue for U-, I- or P-Regulation, fast Data Transfer	01Y021
AS6 - analogue for U-, I-, P-Limit Specification	01Y061
Profibus DP	01Y160
EtherCAT®	01Y170
RS232/485	01Y181
<b>Indications</b>	
GX Display	01Y081
GX Status-LEDs	01Y071
<b>Connectors</b>	
GX-Connector Set X1 / X2 Harting straight	03Y220
GX-Connector Set X1 / X2 Harting angled	03Y240
GX-Water Connection Festo	04Y100
GX- Water Connection Walther (default)	04Y400
Walther Couplings straight	04Y420
Walther Couplings angled	04Y440
Magnetic Valve Control with 24 V DC-Output	04Y035
Magnetic Valve 24 V with Control Cable (2 m)	04Y030
<b>Miscellaneous</b>	
Line Voltage 3 x 400 V (default)	10Y022
Line Voltage 3 x 440 V	10Y025
Line Voltage 3 x 480 V	10Y030
Line Voltage 3 x 208 V	10Y015
Arc-Link for Parallel Operation	10Y100
Bias Voltage Control	10Y040
19" Mounting Set Single-GX	03Y093
19" Mounting Set Duo-GX	03Y091
Remote Control RC 4	06Y401

# Datasheet

## Technical Data

	<b>GX 50/250</b>	<b>GX 50/800</b>	<b>GX 50/1000</b>	<b>GX 60/800</b>	<b>GX 60/1000</b>
<b>Operational Data</b>					
Output Power	5 kW	5 kW	5 kW	6 kW	6 kW
Output Voltage	250 V	800 V	1000 V	800 V	1000 V
Output Current	50 A	14 A	10 A	15 A	12 A
Indications (Option)	3 ½ digit display for current, voltage or power				
Control	Current, voltage or power controlled				
Operation Mode	External via control interface				
Set Point	0 ... 100 % of nominal value for current, voltage or power				
Output Accuracy	+ / - 1 % of nominal value for current, voltage and power				
Arc Suppression	Quenching time: 6 µs up to 3 ms, automatically Delay time: 6 µs up to 10 ms, automatically				
<b>Mains Input Connection</b>					
Line Voltage	3 x 400 V, + / - 10 %, 50/60 Hz, PE, (Option: 3 x 440 V, 3 x 480 V or 3 x 208 V)				
Fusing	3 x 16 A	3 x 16 A	3 x 16 A	3 x 16 A	3 x 16 A
Mains Cable	4 x 1.5 mm <sup>2</sup>	4 x 1.5 mm <sup>2</sup>	4 x 1.5 mm <sup>2</sup>	4 x 1.5 mm <sup>2</sup>	4 x 1.5 mm <sup>2</sup>
Mains Connector (X2)	Harting Han-Modular Compact				
Power Consumption	6 kVA	6 kVA	6 kVA	6.6 kVA	6.6 kVA
<b>DC-Output Connection</b>					
DC-Cable JZ-600-Y-CY	2 x 10 mm <sup>2</sup>	2 x 2.5 mm <sup>2</sup>	2 x 2.5 mm <sup>2</sup>	2 x 2.5 mm <sup>2</sup>	2 x 2.5 mm <sup>2</sup>
DC-Connection (X1)	Harting Han-Modular Compact				
<b>Cooling System</b>					
Water Cooling	Flow > 1.5 l / min, 2 to 8 Bar, < 40° C				
Water Connection	Walther CT-003 (Option: Festo KQ2 10 mm)				
Water Cooling Capacity	300 W	300 W	300 W	300 W	300 W
Air Cooling	Built-in fan, maximum ambient temperature 40° C				
Air Cooling Capacity	45 W	45 W	45 W	45 W	45 W
Fan Noise Emission	L <sub>pA</sub> < 70 dB (A)				
<b>Mechanical Data</b>					
Size (without Plug)	Width: 216 mm (½ 19"), Height: 130 mm (3 HU), Length 591.5 mm				
Weight (without Packaging)	21 kg	21 kg	21 kg	21 kg	21 kg

# Datasheet

## Technical Data

	<b>GX 80/800</b>	<b>GX 80/1000</b>	<b>GX 100/400</b>	<b>GX 100/600</b>	<b>GX 100/800</b>
<b>Operational Data</b>					
Output Power	8 kW	8 kW	10 kW	10 kW	10 kW
Output Voltage	800 V	1000 V	400 V	600 V	800 V
Output Current	20 A	16 A	38 A	30 A	25 A
Indications (Option)	3 ½ digit display for current, voltage or power				
Control	Current, voltage or power controlled				
Operation Mode	External via control interface				
Set Point	0 ... 100 % of nominal value for current, voltage or power				
Output Accuracy	+ / - 1 % of nominal value for current, voltage and power				
Arc Suppression	Quenching time: 6 µs up to 3 ms, automatically Delay time: 6 µs up to 10 ms, automatically				
<b>Mains Input Connection</b>					
Line Voltage	3 x 400 V, + / - 10 %, 50/60 Hz, PE, (Option: 3 x 440 V, 3 x 480 V or 3 x 208 V)				
Fusing	3 x 20 A	3 x 20 A	3 x 20 A	3 x 20 A	3 x 20 A
Mains Cable	4 x 2.5 mm <sup>2</sup>	4 x 2.5 mm <sup>2</sup>	4 x 2.5 mm <sup>2</sup>	4 x 2.5 mm <sup>2</sup>	4 x 2.5 mm <sup>2</sup>
Mains Connector (X2)	Harting Han-Modular Compact				
Power Consumption	9 kVA	9 kVA	11 kVA	11 kVA	11 kVA
<b>DC-Output Connection</b>					
DC-Cable JZ-600-Y-CY	2 x 2.5 mm <sup>2</sup>	2 x 2.5 mm <sup>2</sup>	2 x 6 mm <sup>2</sup>	2 x 6 mm <sup>2</sup>	2 x 4 mm <sup>2</sup>
DC-Connection (X1)	Harting Han-Modular Compact				
<b>Cooling System</b>					
Water Cooling	Flow > 1.5 l / min, 2 to 8 Bar, < 40° C				
Water Connection	Walther CT 003 (Option: Festo KQ2 10 mm)				
Water Cooling Capacity	400 W	400 W	500 W	500 W	500 W
Air Cooling	Built-in fan, maximum ambient temperature 40° C				
Air Cooling Capacity	50 W	50 W	50 W	50 W	50 W
Fan Noise Emission	L <sub>pA</sub> < 70 dB (A)				
<b>Mechanical Data</b>					
Size (without Plug)	Width: 216 mm (½ 19"), Height: 130 mm (3 HU), Length 591.5 mm				
Weight (without Packaging)	23 kg	23 kg	23 kg	23 kg	23 kg

# Datasheet

## Technical Data

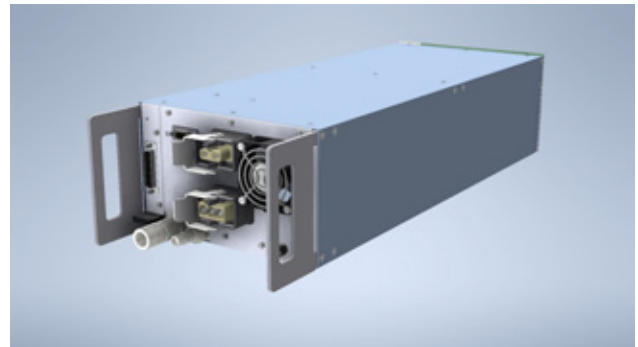
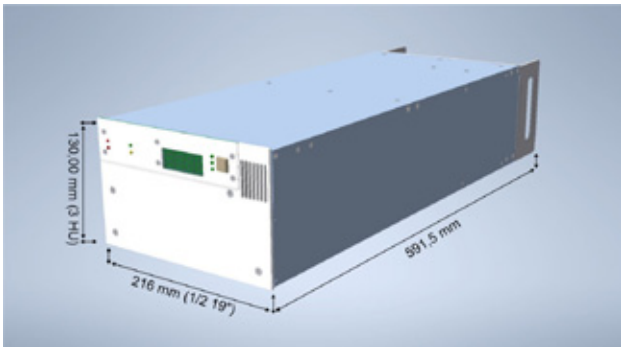
	<b>GX 100/1000</b>	<b>GX 120/200</b>	<b>GX 120/800</b>	<b>GX 150/800</b>	<b>GX 150/1000</b>
<b>Operational Data</b>					
Output Power	10 kW	12 kW	12 kW	15 kW	15 kW
Output Voltage	1000 V	200 V	800 V	800 V	1000 V
Output Current	20 A	60 A	30 A	38 A	30 A
Indications (Option)	3 ½ digit display for current, voltage or power				
Control	Current, voltage or power controlled				
Operation Mode	External via control interface				
Set Point	0 ... 100 % of nominal value for current, voltage or power				
Output Accuracy	+ / - 1 % of nominal value for current, voltage and power				
Arc Suppression	Quenching time: 6 µs up to 3 ms, automatically Delay time: 6 µs up to 10 ms, automatically				
<b>Mains Input Connection</b>					
Line Voltage	3 x 400 V, + / - 10 %, 50/60 Hz, PE, (Option: 3 x 440 V, 3 x 480 V or 3 x 208 V)				
Fusing	3 x 20 A	3 x 25 A	3 x 25 A	3 x 25 A	3 x 25 A
Mains Cable	4 x 4 mm <sup>2</sup>	4 x 4 mm <sup>2</sup>	4 x 4 mm <sup>2</sup>	4 x 4 mm <sup>2</sup>	4 x 4 mm <sup>2</sup>
Mains Connector (X2)	Harting Han-Modular Compact				
Power Consumption	11 kVA	13.2 kVA	13.2 kVA	16.5 kVA	16.5 kVA
<b>DC-Output Connection</b>					
DC-Cable JZ-600-Y-CY	2 x 4 mm <sup>2</sup>	2 x 16 mm <sup>2</sup>	2 x 6 mm <sup>2</sup>	2 x 6 mm <sup>2</sup>	2 x 16 mm <sup>2</sup>
DC-Connection (X1)	Harting Han-Modular Compact				
<b>Cooling System</b>					
Water Cooling	Flow > 1.5 l / min, 2 to 8 Bar, < 40° C				
Water Connection	Walther CT-003 (Option: Festo KQ2 10 mm)				
Water Cooling Capacity	500 W	600 W	600 W	750 W	750 W
Air Cooling	Built-in fan, maximum ambient temperature 40° C				
Air Cooling Capacity	50 W	60 W	60 W	60 W	60 W
Fan Noise Emission	L <sub>pA</sub> < 70 dB (A)				
<b>Mechanical Data</b>					
Size (without Plug)	Width: 216 mm (½ 19"), Height: 130 mm (3 HU), Length 591.5 mm				
Weight (without Packaging)	23 kg	23 kg	23 kg	25 kg	25 kg





# Datasheet

## Dimensions



Exemplary illustration, front panel and rear view can differ, depending on device type, nevertheless, dimensions are the same.

© 2022 ADL Analoge & Digitale Leistungselektronik GmbH. All rights reserved.

ADL products are constantly improved. ADL therefore reserves the right to make technical changes without prior notice or obligation. To the best of our knowledge, the information contained in this product presentation (short version) is the most accurate available as the date of the current edition. The information is not binding.

### We are happy to help!

ADL Analoge & Digitale Leistungselektronik GmbH  
Bunsenstr. 30 · D-64293 Darmstadt  
www.adl-gmbh.com

### Customer Support

Tel. +49 (0) 6151 86072-41 or -42  
Fax +49 (0) 6151 86072-75  
E-Mail: sales@adl-gmbh.com